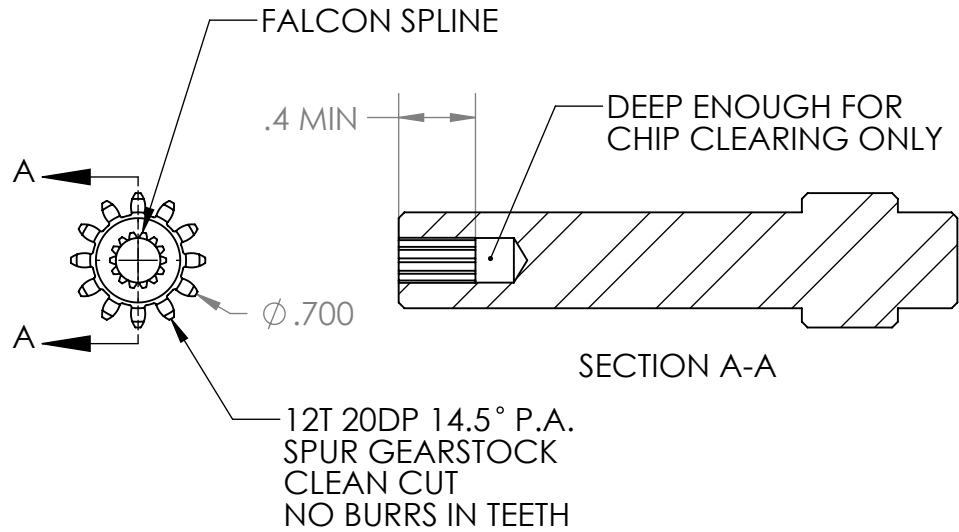
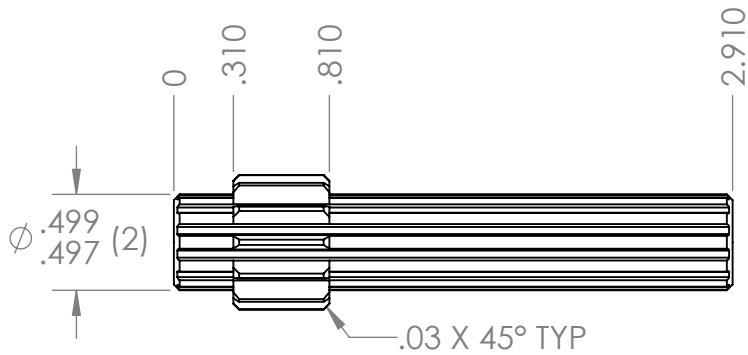
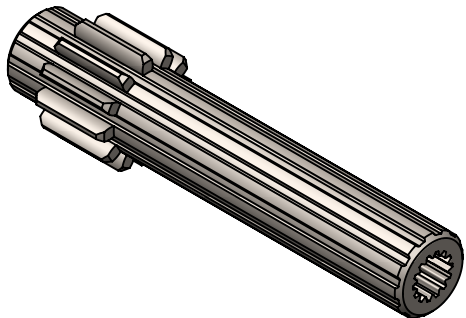



| REVISION HISTORY | | | |
|------------------|--------------------------|------------|-------------|
| REV. | DESCRIPTION | DATE | DRAWN BY |
| 1 | ORIGINAL PRINT | 8/27/2019 | N. MASSOUDA |
| 2 | UPDATED NAME AND CHAMFER | 10/21/2019 | N. MASSOUDA |



*** SEE CAD FOR ADDITIONAL TOOLPATH INFO***



| | | | | | | |
|---------------------------------|-----------------------|-------------------------------------|------|---|--------------|--|
| UNLESS OTHERWISE SPECIFIED: | | COMMENTS: | |  | | |
| DIMENSIONS ARE IN INCHES | | DUAL DIMENSIONS ARE IN MILLIMETERS. | | | | |
| TOLERANCES: | | BREAK ALL SHARP EDGES | | TITLE: | | |
| FRACTIONAL | $\pm 1/16$ | | | 12 TOOTH FALCON 500 | | |
| ANGULAR: MACH | $\pm 1^\circ$ | | | S&S SHAFT GEAR | | |
| ANGULAR: BEND | $\pm 5^\circ$ | | | SIZE | | |
| ONE PLACE DECIMAL | ± 0.1 | | | DWG. NO. | | |
| TWO PLACE DECIMAL | ± 0.01 | | | A am-4145 | | |
| THREE PLACE DECIMAL | ± 0.005 | | | REV | | |
| FOUR PLACE DECIMAL | ± 0.0005 | | | 2 | | |
| MATERIAL | 4140 STEEL GEAR STOCK | CHECKED | NAME | DATE | SCALE: 1:1 | |
| FINISH | DEBUR & ZINC PLATE | ENG APPR. | | | WEIGHT: | |
| | | MFG APPR. | | | SHEET 1 OF 1 | |
| | DO NOT SCALE DRAWING | Q.A. | | | | |